



Product Catalog



INTRODUCTION

Established in 1918, Hochiki is one of the world's leading manufacturers of commercial and industrial fire detection solutions. With a heritage of innovative design and leading-edge technologies, Hochiki's products have acquired global acceptance as the benchmark for high-integrity and longterm reliability.

INTERNATIONAL COVERAGE, REGIONAL COMMITMENT

Hochiki is a wholly independent, multinational, publicly listed group of companies with over 2000 employees working across six manufacturing plants, 38 sales offices and 14 subsidiaries.

Hochiki invests in manufacturing innovation on a continual basis to ensure customer satisfaction, and production facilities in Japan, the United States of America and Europe ensure international continuity of quality, service and supply.

These regional centers design and manufacture products and provide technical support suited to local standards and customer requirements. Total commitment to meeting the needs of individual

national markets has reinforced the company's global reputation, resulting in Hochiki products being installed in many prestigious sites and in over 80 countries worldwide.

Hochiki's vision is to provide products to the highest levels of quality and reliability. Complying with industry standards, the ultimate quality of Hochiki's comprehensive range of products virtually eliminates false alarms and, combined with ease of installation, offers the greatest reliability with the lowest total cost of ownership possible in a modern life safety system.

COMPLIANCE WITH STANDARDS

Working closely with all major approval bodies across the world, Hochiki fire detection and emergency lighting products fully conform with all of the latest standards and regulations.

Manufacturing plants are accredited to ISO 9001:2015 the highest and most recognized standard in the industry.

COMPANY OVERVIEW

Hochiki is a wholly independent, multinational, publicly listed group of companies with over 2000 employees working across six manufacturing plants, 38 sales offices and 14 subsidiaries. One of the world's leading manufacturers of commercial and industrial fire alarm products Hochiki has acquired global acceptance as the benchmark for high-integrity and long-term reliability.

Hochiki's facilities in Japan, the United States of America and Europe design and manufacture products and provide technical support suited to local standards and customer requirements. Total commitment to meeting the needs of individual national markets has reinforced the company's global reputation, resulting in Hochiki products being installed in many prestigious sites and in over 80 countries worldwide.



STATISTICS TAKEN FROM THE HOCHIKI CUSTOMER SERVICE SURVEY DECEMBER 2016

91%

Respondents rated product quality as either 'very good' or 'excellent'

92%

Customers stated our market reputation is 'very good' or 'excellent'

88%

Customers are most likely to recommend our products

INTELLIGENT ADDRESSABLE





Product Overview

The all new L@titude product range of fire alarm control equipment combines the very latest hardware and software to produce a control and indication system, which is powerful and sophisticated, yet simple to use and understand. The flexibility of the L@titude platform is such that it can be re-configured to realize many other control and indication applications, with direct integration into intelligent buildings. Moving away from the simple, price driven competitive model used by most manufacturers today, the L@titude concept is designed to add value to System Designers, Integrators, Service Providers, and end users. Developed from the “ground up” and using some of the most advanced technology available, L@titude is designed as one of the most powerful, intelligent, and technically robust fire alarm products available.

Single Aperture



Double Aperture



STANDARD FEATURES

- UL Listed (Tenth Edition) and FM Approved
- 2 to 8 loop or 2 to 16 loop versions
- 400mA loop current
- 400 sub-address points per loop (800 per loop module)
- 4 programmable NACs; Class B or 2 Class A
- Multiple internal NAC synchronization protocols
- 5.25 A or 10.25 A power supply options
- 3 programmable inputs and 5 programmable relay outputs
- 7 inch, full-color resistive touch screen with intuitive user interface
- Up to 24 programmable soft “function keys”
- Up to 64 user login accounts
- Positive Alarm Sequence
- Pre-Signal
- Alarm Verification
- Drift Compensation
- CO Alarm
- Hard-wired fire and trouble routing inputs and outputs
- Modular and expandable electronics
- Option to “invert” inputs and outputs
- 5000 programmable cause and effects; over 50,000 inputs and outputs
- Can be networked with programmable functionality
- Programming via USB or PC
- L@ti-View Graphical PC User Interface - coming soon!

L@titude Network Vision Annunciator



Product Overview

The FireNET L@titude Network Vision Annunciator is the most qualified annunciator on the market. It is a full-color graphical display and touchscreen and represents the most versatile annunciator for life safety systems available today. The Annunciator is a full-function fire alarm repeater that is configurable and application-flexible for use in a variety of applications, such as hospital nursing stations and elevator alarms.

STANDARD FEATURES

- Full color 7" (800 x 480 pixel) interface
- Replicates information displayed at the FACP
- Automatic display brightness adjustment
- Internal buzzer
- Connects via control panel network terminals
- Low current, 24V DC powered
- Configurable functionality
- Enable key-switch
- Sheet steel enclosure
- Surface or semi-flush enclosure options available

L@TI-VIEW GRAPHICS APPLICATION

Product Code: 0101-02820

STANDARD FEATURES

- L@ti-View works with L@titude, FireNET and FireNET Plus panels.
- Reports configuration mismatch errors –ensuring that the graphics system is properly maintained and updated whenever there are any panel configuration revisions
- Powerful event log filtering and reporting
- Manage the state of the fire system using a combination of graphical images and system controls
- Programmable macro buttons to perform panel control operations
- Full map navigation using configurable buttons or map areas
- Device analog value reporting
- Perform device and zone disablements /enablements
- Operate and restore loop output devices for testing purposes
- Dual screen support for clarity



DUAL SLC PANEL MODULE-S758

The Dual Loop Panel Module monitors loop device status and provides status to the panel processor. It holds device configurations and operates in a standalone manner when catastrophic failures occur.

The Dual Loop Panel Modules can be connected in any available slot (C-K) on the Main Back Board to provide this operating function. Each Dual Loop Panel Module can support either Hochiki or Apollo protocols.



NETWORK CARD - 5723

The L@titude Network module provides enhanced high-Speed communication for networking up to a maximum of 127 fire control panels / annunciators.

L@titude Fire Alarm control panel and annunciators can receive events from other panels in the network. The Class X networking used in conjunction with the L@titude network module provides tolerance against open and short circuit troubles.



MEDIA GATEWAY PANEL MODULE - 5788

The Media Gateway™ is a communication panel module for the L@titude Fire Alarm Control Panel. The Media Gateway Panel Module provides connectivity to a remote monitoring center via Sur-Gard Fibro ordial-up. SIA is the recommended format for usage, but Contact ID is also supported. Transmission can be made through one or two telephone lines, and/or IP through Ethernet. Standard reporting codes have been pre-defined, although the user may customize these codes through the LoopExplorer 2 programming application. The Media Gateway can provide connectivity to third-party networks (please consult a Hochiki applications engineer for further information), and our new graphicssystem L@ti-View.



16 CHANNEL I/O PANEL MODULE - S772

The 16 Channel I/O Interface enhances the versatility of the alarm system by providing additional input and output capabilities to the L@titude Fire Alarm Control Panel. Inputs or outputs can be selected up to 16 individual channels.

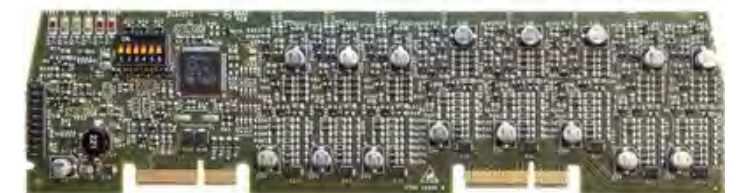
All inputs and outputs are configured in the same way as devices connected to addressable loops of the panel. The 16 Channel I/O Interface can be configured to contribute or act upon cause and effect logic.

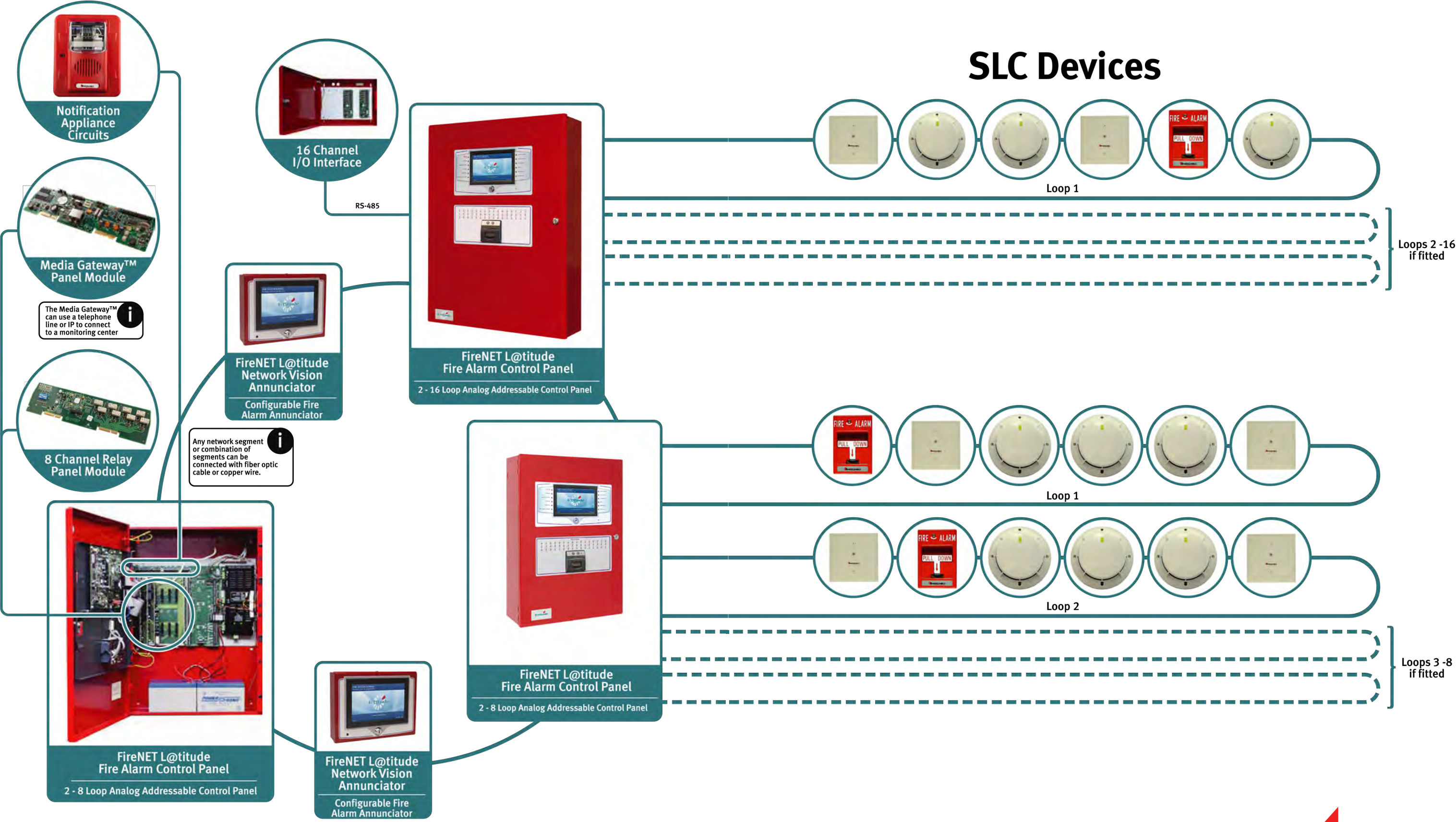
Input points of this device are not supervised and therefore shall not be used for life safety initiation within a UL listed system. In a UL application this module must be housed in the panel or a listed enclosure connected to the panel by metal conduit. Power must also be provided by a UL listed power supply.



8 CHANNEL CONVENTIONAL ZONE PANEL MODULE-S792

The 8 Channel Conventional Zone Panel Module has 8 supervised detection circuits (Class B). Each circuit can support up to 20 conventional detectors and approved devices. Individual circuits may be configured for trigger resistor or short circuit activation. These circuits may be used for any of the standard input actions and can be configured to contribute to cause and effect logic. Each pair of circuits (e.g., 1 and 2, 3 and 4, etc.) can be joined to form a single Class A configuration.





FireNET^{Plus}®



The FireNET Plus® 1127 series control panel is an intelligent addressable fire alarm panel with options containing 1 or 2 SLC loops, a Digital Alarm C o m m u n i c a t o r / T r a n s m i t t e r (DACT), and an RS-485 bus for network communication. The panel supports any combination of addressable devices, up to 127 per signaling line circuit, including thermal and photoelectric smoke detectors/sensors, and monitoring and control modules. The Loop Explorer Windows® based software interface provides the installer with fingertip access to installation programming and diagnostic tools.

FIRENET PLUS

ADDRESSABLE FIRE ALARM CONTROL PANELS - 1 OR 2 LOOPS



STANDARD FEATURES

- UL 864 9th Edition listed
- Multi-loop (1-2) analog-addressable
- 127 addressable points per SLC loop
- Up to 500 Cause & Effect input to output programming commands with AND, OR or COINCIDENCE logic operators
- Built-in help & alarm information screens
- Up to 5,000 ft. wire length per SLC loop
- Network-able up to 64 Panels
- Configurable through keypad
- 3 Programmable Form C relays rated 1 Amp at 30VDC
- 2 Programmable Notification Appliance Circuits with built-in Strobe Sync protocols (Gentex, System Sensor, Wheelock, Amseco)
- Power per NAC: 2.3 Amps Max
- Switchable 120/240VAC 50/60 Hz Power supply
- Programmable Input and Output modules on SLC Loop
- Programmable Function button
- Fire Drill button
- Day and night sensitivity settings
- Power Supply: 5.25 Amp, regulated & integrated
- (2) 360mA auxiliary power available rated at 24VDC
- LCD Display: 8x40 (320 character)
- Programmable NAC Cadence Patterns: Temporal, Continuous or March and Auxiliary Power options: Continuous Reset-able or Door Holder Power
- Listed for up to 60 Ah batteries: (up to 18 Ah in standard enclosure)
- One man walk test – Fire Test Mode
- Available color(s): red or gray

FN-LCD-N

NETWORK LCD ANNUNCIATOR

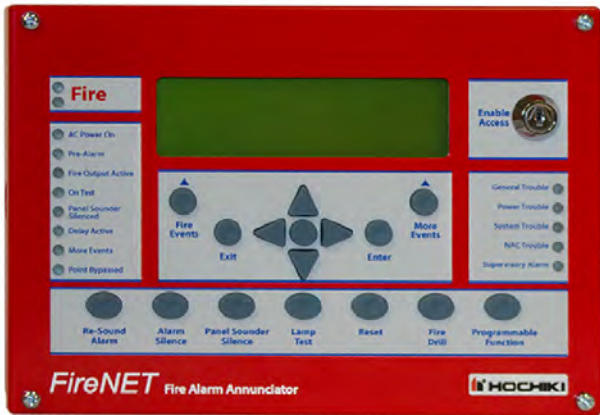


STANDARD FEATURES

- UL 864 9th Edition listed
- Large 320 character liquid crystal display (8 line x 40 character) allows viewing of system status
- LED indicators for Fire, Supervisory Alarm, Pre-Alarm, Fire Output Active, AC Power On, On Test, Panel Sounder Silenced, Delay Active, More Events, Point Bypassed, General Trouble, Power Trouble, System Trouble & NAC Trouble
- Same controls as the FireNET fire panel (Reset, Panel Sounder Silence, Lamp Test, Alarm Silence, Re-sound Alarm, Fire Drill, Programmable Function, More Events, More Fire Events, Enter & Exit)
- Programmable function (button) input
- Configurable through keypad
- Fire Drill button
- Local piezo sounder for event notification
- Supports user codes & firefighter key to enable access & controls
- Powered by FireNET Aux 24VDC or UL fire listed
- Aux. 24VDC supply
- Built-in help & alarm information screens
- 4 Relay Outputs: (3 programmable) Form C relays rated at 1 Amp at 30VDC, 1 preprogrammed supervisory output
- True network annunciator, any or all panels can be routed to the FN-LCD-N. In addition, each event category can be individually routed to the FN-LCD-N
- Available color(s): red or gray

FN-LCD-S

SERIAL LCD ANNUNCIATOR



STANDARD FEATURES

- UL 864 9th Edition listed
- Large 320 character liquid crystal display (8 line x 40 character) allows viewing of system status
- LED indicators for Fire, Supervisory Alarm, Pre Alarm, Fire Output Active, AC Power On, On Test, Panel Sounder Silenced, Delay Active, More Events, Point Bypassed, General Trouble, Power Trouble, System Trouble & NAC Trouble
- Same controls as the FireNET fire panel (Reset, Panel Sounder Silence, Lamp Test, Alarm Silence, Re-sound Alarm, Fire Drill, Programmable Function, More Events, More Fire Events, Enter & Exit)
- Up to 15 FN-LCD-S serial annunciators may be connected to a FireNET control panel or Network Annunciator
- Replicates all panel controls
- Resides on the FireNET slave RS-485 line
- Local piezo sounder for event notification
- Supports user codes & firefighter key to enable access & controls
- Powered by FireNET Aux 24VDC or UL fire listed Aux. 24VDC supply
- Built-in help & alarm information screens
- Available color(s): red or gray



INTELLIGENT ADDRESSABLE DETECTORS



These well-known detectors were all designed and built by Hochiki.

These units represent state of the art technology in sensing and detection at the time of their release. Hochiki America is continually innovating to bring to market the very best in detection and fire alarm control technology. The patented Hochiki Digital Communication Protocol allows for intelligent and robust communication among our Intelligent Addressable products. Hochiki FireNET Intelligent Addressable Fire Alarm Panels work seamlessly with all Hochiki Intelligent Addressable Sensors. Our HCP non-addressable fire control systems work with our conventional line of sensors. Create a complete fire alarm system using Hochiki panels, sensors, modules and accessories.

ACD-V HOCHIKI

MULTI-CRITERIA SENSOR - SMOKE, HEAT, CO DETECTOR

Hochiki America's ACD-V Multi-criteria Smoke-Heat-CO sensor offers a cost effective solution to today's most demanding life safety detection needs. With smoke modes that provide early warning and superior nuisance reduction technology, temperature modes that offer both fixed temperature and rate of rise alarm response to temperature increases, and CO Detection Modes that provide for alarm from both fixed CO concentrations as well as for CO alarming from varying CO Levels over time (CO Hb - CO Hemoglobin), the ACD-V provides the best in life safety protection.

Hochiki America's ACD-V Multi-criteria Detector offer sixteen UL Listed modes of operation. These are the most advanced detectors that Hochiki has ever produced. The ACD-V allows our customers to provide the best in flexible, rock-stable, early warning, life safety detection at competitive pricing.



ACD-V

MULTI-CRITERIA PHOTOELECTRIC SMOKE/
HEAT/CO SENSOR



STANDARD FEATURES

- Low profile - only 2.00” high, including base
- Simple and reliable device addressing
- Supports 16 operational modes
- Automatic compensation for sensor contamination
- Uses the noise-immune Digital Communication Protocol (DCP), which utilizes interrupts for fast response to fires
- Two built-in power/alarm LEDs
- Programmable non-polling LEDs
- Non-directional smoke chamber
- Fully adjustable heat detection-135°F to 150°F
- 10 years CO sensor life span
- Vandal resistant security locking feature

ACC-V

MULTI-CRITERIA PHOTOELECTRIC SMOKE/
HEAT SENSOR



STANDARD FEATURES

- Low profile - only 2.00” high, including base
- Simple and reliable device addressing
- Automatic compensation for sensor contamination
- Uses the noise-immune Digital Communication Protocol (DCP), which utilizes interrupts for fast response to fires
- Two built-in power/alarm LEDs
- Programmable non-polling LEDs
- Non-directional smoke chamber
- Fully adjustable heat detection-135°F to 150°F
- UL maximum spacing of 70 feet (heat detection only)
- Vandal resistant security locking feature

ALN-V

PHOTOELECTRIC SMOKE SENSOR



STANDARD FEATURES

- Low profile - only 2.00” high, including base
- Simple and reliable device addressing
- Automatic compensation for sensor contamination
- Built-in fire test feature
- Uses the noise-immune Digital Communication Protocol (DCP), which utilizes interrupts for fast response to fires
- Two built-in power/alarm LEDs
- Programmable non-polling LEDs
- Non-directional smoke chamber
- Vandal resistant security locking feature

ATJ-EA

FIXED TEMP/RATE OF RISE HEAT SENSOR



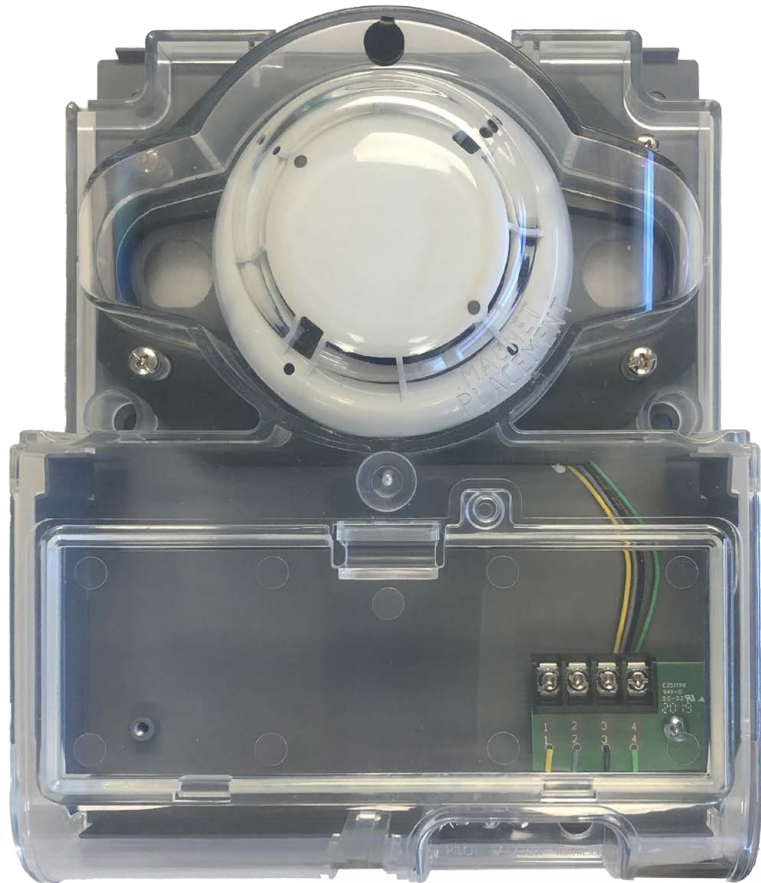
STANDARD FEATURES

- Low profile - only 2.00” high, including base
- Simple and reliable device addressing
- Automatic compensation for sensor contamination
- Uses the noise-immune Digital Communication Protocol (DCP), which utilizes interrupts for fast response to fires
- Two built-in power/alarm LEDs
- Programmable non-polling LEDs
- Rate of rise temperature threshold = 15°F/min
- Adjustable threshold temperature = 135°F - 190°F (UL)
- Adjustable threshold temperature = 32°F - 190°F (Actual)
- UL maximum spacing of 70 feet
- Vandal resistant security locking feature



DH-100-A

ADDRESSABLE DUCT SMOKE DETECTOR



STANDARD FEATURES

- NEW Rugged Durable Housing
- Easy Smoke Testing Port
- Removable Terminal Cover
- Durable Steel Base, Silicone Gaskets, Polycarbonate Housing
- Multi-Voltage Compatibility
- Installs quickly and easily
- No screens or filters to clean
- UL 268A Listed

ALO-V

INTELLIGENT ANALOG PHOTOELECTRIC SMOKE DETECTOR



STANDARD FEATURES

- UL 268 7th Edition Listed
- Low profile, 1.68 tall
- False alarm resistant
- Non-directional smoke chamber
- Advanced multi-criteria smoke detection
- Optical particulate identification sensor
- Early fire smoke detection
- Low standby current 400uA
- 360° view of detector status LED



HSB-NSA-6

ADDRESSABLE SENSOR BASES



YBN-NSA-4

ADDRESSABLE SENSOR BASES



ASB

ADDRESSABLE SOUNDER BASE



ASBL

ADDRESSABLE SOUNDER BASE - LOW FREQUENCY



STANDARD FEATURES

- UL & ULC Listed
- 2-wire loop connection
- Designed for use with all addressable sensors
- Plastic tamper lock feature
- Rugged design with screw terminals for wiring connections
- Optional remote LED wiring configuration available

STANDARD FEATURES

- UL269 and UL464 Listed
- Programmable evacuation codes—Continuous, Temporal Code 3 and March Code
- Separate addresses range (128—254) for easy Cause and Effect programming
- Uses the noise-immune Digital Communication Protocol (DCP), which utilizes interrupts for fast response to fires
- Programmable activation by General Alarm, by zone and/ or by individual address
- Up to 127 Sensors and 127 ASB's can be on one SLC loop
- High sound pressure level (85dB SPL at 10 ft.)
- Programmable activation by General Alarm, by zone and/ or by individual address

STANDARD FEATURES

- UL269 and UL464 Listed
- 520 Hz Low Frequency Sounder
- Programmable evacuation codes—Continuous, Temporal Code 3 and March Code
- Separate addresses range (128—254) for easy Cause and Effect programming
- Uses the noise-immune Digital Communication Protocol (DCP), which utilizes interrupts for fast response to fires
- Programmable activation by General Alarm, by zone and/ or by individual address
- Up to 127 Sensors and 127 ASB's can be on one SLC loop
- Programmable activation by General Alarm, by zone and/ or by individual address



MODULES



FRCM SERIES

FAST RESPONSE CONTACT MODULE



STANDARD FEATURES

- Provides a Class A or Class B Supervised input
- UL 864 9th Edition Listed
- Uses the noise-immune Digital Communication Protocol (DCP), which utilizes interrupts for fast response to fires
- Up to 127 modules can be placed on a single SLC Loop
- Bi-Colored indicating LED provides module status
- Yellow LED indicates a short circuit condition (FRCMA-I version)
- Can be programmed to monitor Normally Open (NO) or Normally Closed (NC) contacts
- Accepts up to 14 AWG wire

DIMM

DUAL INPUT MONITOR MODULE



STANDARD FEATURES

- Provides two Class B Supervised Inputs
- Monitoring points, only uses one SLC address
- UL 864 9th Edition Listed
- Uses the noise-immune Digital Communication Protocol (DCP), which utilizes interrupts for fast response to fires
- Up to 127 modules can be placed on a single SLC Loop
- Bi-Colored indicating LED provides module status
- Can be programmed to monitor Normally Open (NO) or Normally Closed (NC) contacts
- Accepts up to 14 AWG wire

SOM-A

SUPERVISED OUTPUT MODULE



STANDARD FEATURES

- Provides a Class A or Class B Supervised Output circuit rated for 2A at 24VDC
- UL 864 9th Edition Listed
- Uses the noise-immune Digital Communication Protocol (DCP), which utilizes interrupts for fast response to fires
- Up to 127 modules can be placed on a single SLC Loop
- Bi-Colored indicating LED provides module status
- Flexible application
- Accepts up to 14 AWG wire
- Programmable evacuation codes—Continuous, Temporal Code 3 and March Code
- Programmable activation by General Alarm, by zone and/or by individual address

R2M SERIES

DUAL RELAY MODULE



STANDARD FEATURES

- Provides two independently configurable Form C relay contacts, using one SLC address
- UL 864 9th Edition Listed
- Uses the noise-immune Digital Communication Protocol (DCP), which utilizes interrupts for fast response to fires
- Up to 127 modules can be placed on a single SLC Loop
- Bi-Colored indicating LED provides module status
- status is soft ware controlled and can be programmed to blink red or green when polled
- Accepts up to 14 AWG wire
- Programmable activation by General Alarm, by zone and/ or by individual address

DCP-AMS-KL

INTELLIGENT ADDRESSABLE MANUAL PULL STATIONS



STANDARD FEATURES

- Single Action (Pull)
- Addressable integrated design
- All metal construction
- Extremely easy to operate
- Bi-colored status LED indicates Standby and Alarm conditions
- Enclosed switch with glass rod (included)
- Terminals accept up to 14AWG wire
- Surface mount back box available
- ADA compliant
- Key lock for reset using standard CAT 30 key

DCP-AMS-KL-LP

INTELLIGENT ADDRESSABLE MANUAL PULL STATIONS



STANDARD FEATURES

- Dual Action (Lift & Pull)
- Addressable integrated design
- All metal construction
- Extremely easy to operate
- Bi-colored status LED indicates Standby and Alarm conditions
- Enclosed switch with glass rod (included)
- Terminals accept up to 14AWG wire
- Surface mount back box available
- Key lock for reset using standard CAT 30 key

DCP-AMS

INTELLIGENT ADDRESSABLE MANUAL PULL STATIONS



STANDARD FEATURES

- Single Action (Pull)
- Addressable integrated design
- All metal construction
- Extremely easy to operate
- Bi-colored status LED indicates Standby and Alarm conditions
- Enclosed switch with glass rod (included)
- Terminals accept up to 14AWG wire
- Surface mount back box available
- ADA compliant (except LP models)

DCP-AMS-LP

INTELLIGENT ADDRESSABLE MANUAL PULL STATIONS



STANDARD FEATURES

- Dual Action (Lift & Pull)
- Addressable integrated design
- All metal construction
- Extremely easy to operate
- Bi-colored status LED indicates Standby and Alarm conditions
- Enclosed switch with glass rod (included)
- Terminals accept up to 14AWG wire
- Surface mount back box available



CONVENTIONAL FIRE ALARM



DH-100-P

Conventional Duct Smoke Detector



Operation

The DH-100-P 4-wire duct smoke detector provides early detection of smoke and products of combustion present in air moving through HVAC ducts in Commercial, Industrial and Residential applications.

The DH-100-P is designed to prevent the recirculation of smoke in areas by the air handling systems, fans and blowers. Complete systems may be shut down in the event of smoke detection. The HOCHIKI AMERICA DH-100-P operates on 120VAC, 240VAC, 24VAC, or 24VDC and has no compatibility restrictions.

Substantial changes have been engineered to the conventional duct detector construction both inside and out.

- New Rugged Durable Housing
- No Disassembly Needed for Install, Wiring or Testing
- Easy Smoke Testing Port
- Removable Terminal Cover
- Durable Steel Base, Silicone Gaskets,

Standard Features

- Detects and limits the spread of smoke throughout building HVAC ducts
- Compatible with building automation and fire alarm systems
- Installs quickly and easily
- No screens or filters to clean
- Rugged gray steel back box with clear cover
- Accessories - Remote LED alarm and horn indication capability and test switch
- UL 268A Listed

CONVENTIONAL

HCA

CONVENTIONAL FIRE ALARM CONTROL PANEL



STANDARD FEATURES

- UL864 9th Edition / NFPA Compliant
- Fully programmable using simple menu options
- Installer friendly and supports flush or surface mount without a separate trim-ring
- Built-in two-line (16 Characters for each line) LCD display provides easy to read information
- 15 Key control buttons for easy programming, reset and silencing
- Real time clock
- Event History log (256 events) with Date/Time stamp which can be viewed from LCD display
- Compatible with wide range of detection devices
- 4 Programmable Supervised NAC outputs
- 6.5 Amp power supply
- Switchable 120/240VAC 50/60 Hz Power supply
- 3 Programmable output patterns for NAC circuits
- Hochiki Notification Sync Protocol Built-in
- Built-in Dialer for HCA-2D, HCA-4D and HCA-8D Only
- Supports Releasing of Agents & Water on HCA-4 & HCA-8 models
- 3 programmable general purpose relays
- Dedicated alarm and trouble relays
- Built-in walk test feature
- Supports up to two 12V, 18Ah Backup batteries
- Supports one Remote Annunciator via RS-485



HOCHIKI AMERICA CORPORATION
7051 Village Drive, Suite 100,
Buena Park, CA 90621-2268



Phone: 714-522-2246
Technical Support: 800-845-6692



WWW.HOCHIKI.COM
sales@hochiki.com
technicalsupport@hochiki.com



SOE-24V

CONVENTIONAL PHOTOELECTRIC SMOKE DETECTOR



STANDARD FEATURES

- UL 268 7th Edition Listed
- High signal-to-noise ratio and sensitivity stability effective in a wide range of environmental conditions
- Wide viewing angle alarm indicators
- Automatic drift compensation and maintenance indication
- Built-in magnetic test feature
- Break-away, hidden locking feature for use with NS bases
- Optimized reduction to false alarms and enhanced reaction time to real fires

SOE-24H

CONVENTIONAL PHOTOELECTRIC SMOKE/HEAT DETECTOR



STANDARD FEATURES

- UL 268 7th Edition Listed
- Detects 20°F/minute rate of temperature rise or 135°F which ever occurs first
- High signal-to-noise ratio and sensitivity stability effective in a wide range of environmental conditions
- Wide viewing angle alarm indicators
- Automatic drift compensation and maintenance indication
- Built-in magnetic test feature
- Break-away, hidden locking feature for use with NS bases
- Optimized reduction to false alarms and enhanced reaction time to real fires



SOC-24V

CONVENTIONAL PHOTOELECTRIC SMOKE DETECTOR



STANDARD FEATURES

- 12 or 24VDC
- Computer-designed non-directional smoke chamber
- 360° view of detector status LED
- Micro fine bug screen capable of rejecting steam
- Advanced engineered non-directional smoke chamber
- Low profile - only 2.00" high, including base
- 2 or 4 wire base compatibility, relay bases available
- Highly stable operation, RF/Transient protection
- Low standby current, 59µA at 24VDC
- One Bi-colored built-in power/sensitivity supervision/alarm LEDs
- Automatic Sensitivity window verification function meets outlined requirements in NFPA 72, Chapter 2 & 7, Inspection, Testing and Maintenance

SOC-24VN (no magnet test)

CONVENTIONAL PHOTOELECTRIC SMOKE DETECTOR



STANDARD FEATURES

- 12 or 24VDC
- Computer-designed non-directional smoke chamber
- 360° view of detector status LED
- Micro fine bug screen capable of rejecting steam
- Advanced engineered non-directional smoke chamber
- Low profile - only 2.00" high, including base
- 2 or 4 wire base compatibility, relay bases available
- Highly stable operation, RF/Transient protection
- Low standby current, 59µA at 24VDC
- One Bi-colored built-in power/sensitivity supervision/alarm LED
- Automatic Sensitivity window verification function meets outlined requirements in NFPA 72, Chapter 2 & 7, Inspection, Testing and Maintenance
- International use ONLY

DCD-135/190

FIXED TEMPERATURE AND RATE OF RISE HEAT DETECTOR

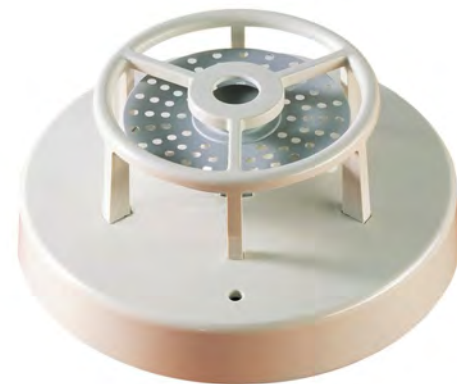


STANDARD FEATURES

- UL Listed, FM Approved, CSFM Approved
- Available models: 135°F fixed temperature/rate of rise (DCD-135) or 190°F fixed temperature/rate of rise (DCD-190)
- UL Listed spacing up to 60 feet by 60 feet
- 2 or 4 wire base compatibility, relay bases available
- Highly stable operation, RF/transient protection (reduces false alarms)
- Two built-in power/alarm LEDs confirm detector status (360 viewing)
- Compatible with all Hochiki America conventional bases
- Available color(s): bone or white

DFE-135/190

FIXED TEMPERATURE HEAT DETECTOR



STANDARD FEATURES

- Choice of fixed temperature - 135°F or 190°F
- UL Listed ceiling spacing of 50' by 50' (2,500 square feet)
- Self-Restoring
- Heat element protected by a built-in guard
- Contact Rating of 100 mA
- Highly Dependable
- Latching LED base available



HPS-SAK

MANUAL NON-CODED PULL STATIONS



STANDARD FEATURES

- Single Action (Pull)
- UL Listed, CSFM Listed
- All metal construction
- Extremely easy to operate
- Enclosed switch with glass rod (included)
- 10 Amps at 120 VAC
- Available in Spanish (HPS-DAH/S)

HPS-DAK

MANUAL NON-CODED PULL STATIONS



STANDARD FEATURES

- Dual Action (Lift & Pull)
- UL Listed, CSFM Listed
- All metal construction
- Extremely easy to operate
- Enclosed switch with glass rod (included)
- 10 Amps at 120 VAC
- Available in Spanish (HPS-DAH/S)

HPS-SAK-EX/WP

EXPLOSION PROOF/WEATHERPROOF MANUAL PULL STATION



STANDARD FEATURES

- Single Action (Pull)
- UL Listed, CSFM Listed
- Compatible with all Hochiki control panels
- All metal construction
- Rated class I group B (hydrogen) C&D, class II groups E, F, G, class III, 4X outdoor
- Weatherproof
- Corrosion-resistant construction
- Latching alarm levers
- Key-locked reset
- Optional glass break rod

HPS-SAH-WP

WEATHERPROOF MANUAL PULL STATIONS



STANDARD FEATURES

- Single Action (Pull)
- 10A, 120 VAC contacts
- Rugged die-cast aluminum housing
- Neoprene sealing gasket
- Corrosion-resistant construction
- Latching pull-down lever
- Screw terminal connections



CONVENTIONAL

VOICENET

HIGH RISE VOICE EVACUATION SYSTEMS



STANDARD FEATURES

- UL 864 9th Edition Listed
- True multiplex 6 channel distributed audio
- Integrated Fire Phone System (optional)
- Modular system - components added as needed
- Integrated 2 Channel Digital Message Repeater
- Live microphone paging to any zones
- Fast RS-485 communication protocol
- Fully supervised
- Easy installation and operation
- Natural voice sound recordings
- Built-in alarm evacuation and alert signals
- Up to 4 minute message capacity
- Compatible with 12VDC or 24VDC fire alarm panels
- UL Listed to be integrated with FireNET® 2127/4127
- 3 minute message restart on microphone key
- Up to 256 distributed panels

LIFE SAFETY NOTIFICATION



HE SERIES (HE/HES/HEH)

HORNS AND MULTI-CANDELA STROBES AND HORN/STROBES



STANDARD FEATURES

- Wall mount
- Nominal Voltage 12VDC and 24 VDC
- Tamperproof 24VDC units have field selectable candela options of 15, 30, 60, 75, and 110 candela
- 12VDC units have field selectable candela options of 15, 30, 60, and 75 candela
- Unit Dimensions: 5" high x 4.5" wide x 2.5" deep
- Input terminals supports 12 to 18 gauge wire
- Switch selection for high or low dBA
- Switch for chime, whoop, mechanical and 2400Hz tone
- Switch for continuous or temporal 3: (not available on whoop tone)
- Surface mount with the HSB (Hochiki surface mount box)
- Silence horn while strobes remain flashing
- Wide voltage range 8-17.5VDC (12VDC units) 16-33VDC
- Available color(s): red or off-white

HC SERIES

MULTI-CANDELA STROBES AND HORN/STROBES



STANDARD FEATURES

- Ceiling mount
- Nominal Voltage 24 VDC
- Tamperproof Field Selectable candela options of 15, 30, 75, 95, 115 & 150
- Unit Dimensions: 6" x 2.6"
- Input Terminals support 12 to 18 AWG
- Switch Selection for High or Low dBA
- Switch Selection for 2400Hz or Mechanical Tone
- Switch Selection for Continuous or Temporal 3
- Surface Mount with the HCSB (Hochiki Ceiling Surface Mount Box)
- Silence Horn While Strobes Remain Flashing
- Wide Voltage Range 16-33 VDC
- Available color(s): red or off-white



HSSPKxLP SERIES

SPEAKERS AND MULTI-CANDELA SPEAKERS AND SPEAKER/STROBES



STANDARD FEATURES

- Strobe Nominal Voltage 24 VDC
- Tamperproof Field Selectable candela options of 15, 30, 75, 95 & 115
- Speaker only models can be wall or ceiling mounted
- Unit Dimensions: 6.1" x 1.88"
- High Quality dBA Output
- Frequency Range 400-4000Hz
- Input Terminals supports 12 to 18 AWG
- Field selectable power taps: 1/8W, 1/4W, 1/2W, 1W, 2W and 4W
- Field Selectable Speaker Voltage 25 or 70.7 VRMS Standard
- Strobe maintains constant flash rate (1Hz) regardless of input voltage
- Available color(s): red or off-white

HHLF SERIES

LOW FREQUENCY HORNS



STANDARD FEATURES

- Nominal voltage 24 VDC
- Unit dimensions: 6.125" H x 5.5" W x 1.625" D
- Synchronize horn with Hochiki HTSM Synchronization Control Module
- Prewire entire system, install mounting bracket, then install signals
- Input terminals accept 12 to 18 AWG
- Produces a 520Hz square wave, temporal 3 tone
- Jumper selection for normal or loud dBA
- Temporal 4 pattern available when used with Hochiki HTSM Synchronization Module
- Temporal 4 520Hz measured per ANSI/UL 2075
- Tamperproof re-entrant style grill and locking screw (optional use)
- Available color(s): red or off-white

HHSLF SERIES

LOW FREQUENCY HORN/STROBES



STANDARD FEATURES

- Nominal voltage 24 VDC
- Unit Dimensions: 6-1/2" (16.5 cm) high x 5-1/2" (14.0 cm) wide x 2" (5.0 cm) deep
- Produces a 520 Hz square wave, temporal 3 tone
- Fixed candela options: 15, 110 and 177
- Jumper selection for normal or loud dBA
- Super-Slide® Bracket - Ease of Supervision Testing
- Input terminals accept 12 to 18 AWG
- Temporal 4 pattern available when used with Hochiki's Synchronization Module
- Temporal 4 520 Hz measured per ANSI/UL 2075
- Tamperproof re-entrant style grill and locking screw (optional use)
- Available color(s): red or off-white



HX93 SERIES

MINI-HORNS



STANDARD FEATURES

- Nominal voltage 12VDC and 24VDC
- Jumper for selectable temporal 3 or continuous tone
- Horn frequency of 3100Hz
- Input terminals support 12 to 18 gauge wire
- Low current consumption
- Textured finish high impact plastic faceplate
- Available color(s): red or off-white

WHE SERIES

WEATHERPROOF HORN/STROBES



STANDARD FEATURES

- Nominal voltage 24VDC
- Unit is shipped with WHES24-75 Candela Strobe or WHEC24-75 Candela Horn/Strobe
- Switch selection for high dbA
- Switch for mechanical and 2400hz tone
- Switch for continuous tone
- Input terminals supports 12 to 18 gauge wire
- Tamperproof re-entrant grill
- Wide voltage range of 16-33 VDC
- Separate horn and strobe functions
- Available color(s): red or off-white

B6-24 / B10-24

FIRE ALARM BELLS

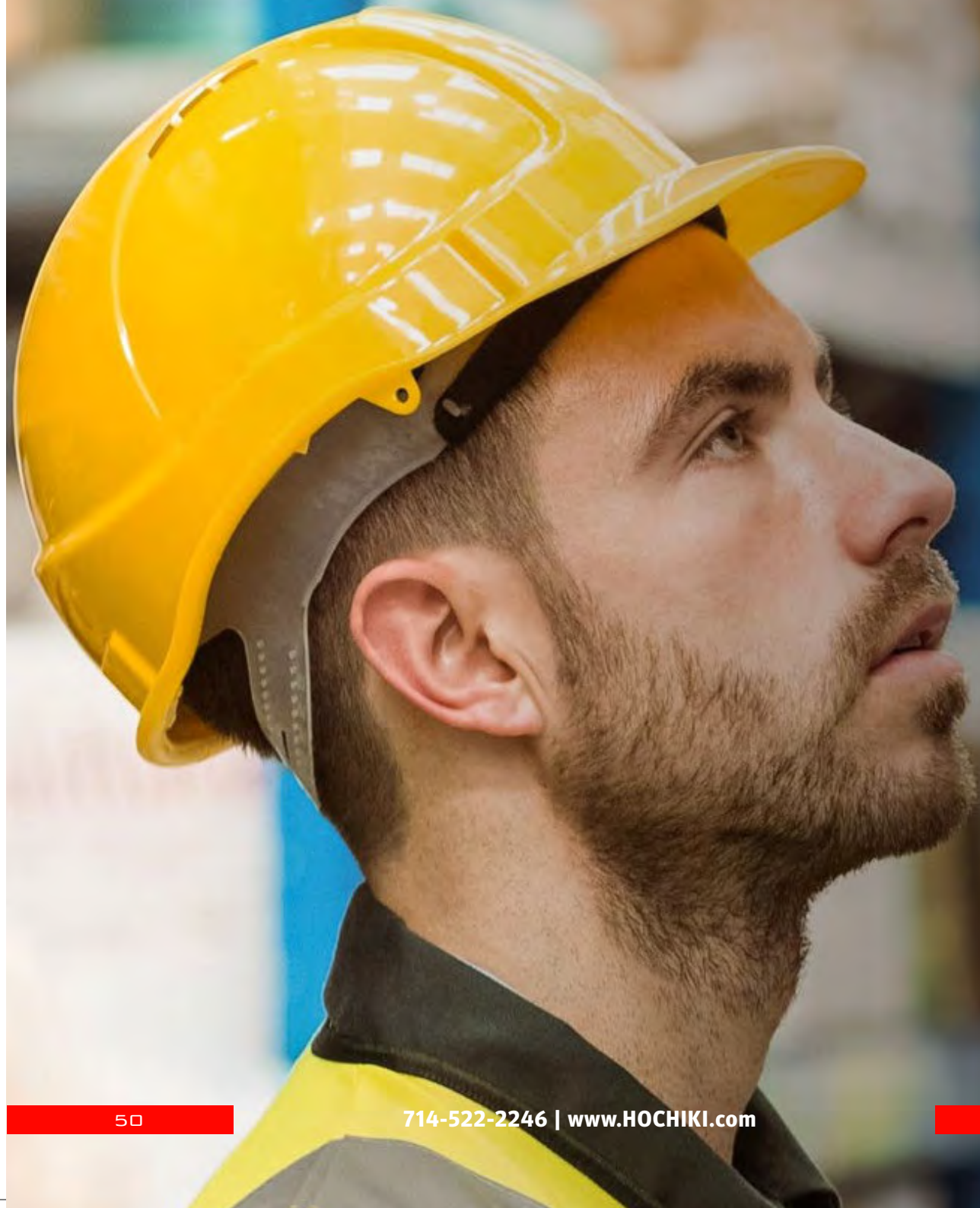


STANDARD FEATURES

- Available in 6" or 10" models
- High dbA output
- Mounts to a standard 4" square electrical box
- NSI/UL Listed for outdoor use when used with the weatherproof back box
- 18 AWG wire leads
- Meets ANSI/UL 464 requirements



TESTING ACCESSORIES



The world's first multi-stimulus detector tester for smoke, heat and / or CO fire detectors enabling faster and more efficient testing of both single and multi-sensor detectors. The production of different stimuli (e.g. smoke, heat) can be achieved sequentially or simultaneously.

Testifire's array of advanced and intelligent technologies changes traditional approaches to test stimuli production and delivery.

Testifire is the result of several years of technological development to meet 21st century health, safety, environment and technological demands.

SMOKE, HEAT, AND CO



TESTING ACCESSORIES

SOLO461

1x SOLO 460 CORDLESS HEAT HEAD UNIT
2x SOLO 760* BATTERY BATONS
1x SOLO 726* CHARGER

STANDARD FEATURES

- Includes 2 NiMH Batteries and charger
- Lightweight and simple to use
- Suits fixed temp, combination, and ROR detectors up to 194°
- Unique IR activation and Cross Air Technology for optimum energy use
- Directs heat straight at detector for rapid activation



SOLO330

AEROSOL DISPENSER

STANDARD FEATURES

- Universal, lightweight, and simple to use
- Suits detectors up to 4" in diameter, clear cup for view of detector LED
- Spring-loaded for drop ceiling; Swing frame allows for use at any angle
- For use with SOLOA4 or Smoke Centurion (M8) aerosol smoke detector testers
- UL Listed; Manufacturer Approved
- Lifetime Limited Warranty



SOLO200

CORDLESS HEAT DETECTOR TEST KIT

STANDARD FEATURES

- For use with Solo Access Poles
- Universal design suits widest range of detectors
- Color-coded heads rotate to provide a combination of sizes and settings
- Lifetime limited warranty





CELLo3

CELLCHECKER

STANDARD FEATURES

- Accurate pulse load testing
- Tests SLA batteries
- Identifies weak or failing batteries in alarm systems
- Tests battery performance - not just voltage/internal resistance
- Accessories:
 - CELLo1CS Padded Case
 - CELLo1LD 48” Lead with Charger (Plier-Type)
 - CELLo1RL 48” Lead with Clamps (Clip-Type)
 - CELLPAC CellChecker Accessory Kit



DB01

DB CHECKER

STANDARD FEATURES

- Meets IEC651 Type2 and ANSI S1.4 Type 2 standards
- Measurement Range: 32 to 130 dB
- A or C frequency weighting
- Fast or slow time weighting
- Includes 4 plugs



DB02

DB CHECKER

STANDARD FEATURES

- Ideal for testing audible public emergency alarm appliances
- Easy to use
- Conforms to NFPA 72
- Meets IEC651 Type2 and ANSI S1.4 Type 2 standards



SOLOC6

CO DETECTOR TESTER

STANDARD FEATURES

- Safe, controllable, genuine nonflammable CO gas
- Only CO tester approved for Systems Sensor and Interlogix CO Alarms
- Fast test and reset times
- UL Classified; Manufacturer Approved
- Designed for use with system monitored CO detectors



A7-AIR

NON-FLAMMABLE AIR DUSTER

STANDARD FEATURES

- Non-flammable hand-held canned air solution.
- A7 Air is silicone-free and conforms to new global aerosol regulations.
- 100z cans are sold in cases of 12.



SOLOA10

NON-FLAMMABLE AEROSOL SMOKE DETECTOR TESTER

STANDARD FEATURES

- Non-flammable aerosol smoke.
- For use by hand or with a dispenser (Solo 330/332).
- Silicone-free.
- Sold in cases of 12.





SABRE

2.6 OZ AEROSOL SMOKE DETECTOR TESTER

STANDARD FEATURES

- Faster detector activation and clearing
- More tests per can; lowest cost per test
- Eco-responsible 100% biodegradeable sabre; ozone friendly, no CFC's
- UL Listed; Manufacturer Approved
- Silicone Free



SMOKE CENTURION (M8)

2.6 OZ AEROSOL DETECTOR TESTER

STANDARD FEATURES

- I For use by hand or with dispenser (Solo 330)
- Fast detector activation and clearing; More tests per can
- No CFC's and low GWP Propellant
- UL Listed; Manufacturer Approved
- Code Compliant
- Silicone Free



BLOWOUT

DETECTOR DUSTER

STANDARD FEATURES

- Large 10 oz can
- Perfect for use with fire alarm test equipment
- No CFC's
- Silicone Free

THE HISTORY OF THE HOCHIKI GROUP OF COMPANIES

The history of Hochiki dates back to 1918, with the formation of the Hochiki Group of Companies. Significant events in Hochiki's history are dated up to present day:

- 1918 — Hochiki Corporation was established in Tokyo, Japan as Japan's first manufacturer of fire alarm equipment
- 1920 — The world's first addressable fire alarm system was installed in Japan by Hochiki Corporation
- 1951 — The production of the "Rate-of-Rise" heat detectors
- 1967 — The Ionization Smoke Detector was developed
- 1972 — Hochiki America Corporation subsidiary was established
Hochiki Research Laboratory in Tokyo, Japan was established
Hochiki Ionization Smoke Detector was approved by Underwriters' Laboratories, Inc.
- 1973 — Intrinsically Safe Fire Alarms System was developed
- 1977 — Hochiki America moved its facility from Hawaiian Gardens, CA to Huntington Beach, CA
- 1984 — Hochiki America began manufacturing detector bases
- 1986 — The current analog addressable fire protocol was developed – Digital Communication Protocol (DCP)
- 1988 — Hochiki America began operation as a manufacturing facility with additional production lines of smoke detector and bases being transitioned over to the United States from Japan
- 1991 — Hochiki Europe (UK) Ltd. was established in Kent, United Kingdom
- 1992 — Hochiki America established APA Technology, Inc., a subsidiary of Hochiki America and Hochiki Corporation
- 1994 — Hochiki America obtained ISO 9002 certification
- 1995 — Hochiki Corporation opened one of the world's largest fire testing facilities in Miyagi, Japan
- 1997 — Hochiki Singapore Branch Office was established
- 1998 — APA Technology Inc. merged with Hochiki America
- 1999 — Hochiki America moved to a larger facility in Buena Park, CA
- 2001 — The Beijing, China representative office was established
- 2003 — Hochiki America introduced its first "UL" approved analog addressable fire alarm control panel- the FireNet®
- 2006 — The Hochiki Fire Prevention Technology Corporation was established in Beijing, China
- 2007 — Hochiki America acquired UL 864 9th Edition listing for FireNet®
Hochiki America begins production of new models, ALK-V and SLV-24
- 2012 — Hochiki America celebrated its 40th anniversary
Hochiki Corporation Japan acquired Kentec Electronics Ltd.
Hochiki America acquired VES, LLC, a subsidiary of Kentec Electronics, Ltd.
- 2018 — Hochiki Celebrates 100 Year anniversary



Now a century old, Hochicki's products are widely used throughout the world including the Kyoto Imperial Palace, Goodison Park Liverpool and Toyota Motor Corp. With 36 sales offices and 6 manufacturing plants, Hochiki Corporation is known globally for their high standard of quality and is a leading edge designer and manufacturer of life safety systems.





7051 Village Drive, Suite 100 Buena Park, CA 90621-2268 USA
+1-714-522-2246
<http://www.hochikiamerica.com/>
sales@hochiki.com

620 Allendale Road King of Prussia, PA 19406 USA
+1-800-270-3066
<http://www.ves-network.com/>
info@ves-network.com

Av Junto Al Rio 24Fa Colonia Junto Al Rio Temixco, Morelos, CP 62584, Mexico
+52-777-326-3855
<https://www.hochikiamerica.com/certificaciones-en-mexico>
exportsales@hochiki.com

Grosvenor Road, Gillingham Business Park, Gillingham, Kent, ME8 0SA,
United Kingdom
+44-1-634-260131
<http://www.hochikieurope.com/>
info@hochikieurope.com

Office No. C-205, HQ Building, Dubai Silicon Oasis, PO Box 341415,
Dubai, UAE
+971-4372-4130
<https://www.hochikieurope.com/sector/hochiki-middle-east>
sales@hochiki.ae

Via Luigi Galvani, 20, 37138 Verona VR, Italy
+39-045-574028
<http://www.hochiki.it/>
info@hochiki.it

#704, 7th floor, Time Tower, M G Road, Gurgaon-122002, Haryana, India
+91-0-124-4777930
URL.<http://www.hochiki.in/>
info@hochiki.in

Block Y, Unit 1 Regents Park Estate, 391 Park Road, Regents Park, NSW 2143, Australia
+61-2-9738-5566
<http://www.hochikiaustralia.com/>
sales@hochikiaustralia.com

82 Ubi Ave 4 #06-02 Edward Boustead Centre, Singapore 408832
+65-6841-9728
<http://www.hochikiasiapacific.com/>
sales@hochikiasiapacific.com

BB Bldg., 10th Floor 1011, 54 Sukhumvit 21, Kwaeng Klong Toey Nua, Khet Wattana
Bangkok 10110, Thailand
+66-2-664-4445
<http://www.hochikisingapore.com/>
info@hochiki.co.th

Sahid Sudirman Center, 56th Floor, Jl. Jend Sudirman no 86 Karet Tengsin, Tanah Abang
Jakarta Pusat 10220, Indonesia
+ 6221 8063 1817
<https://www.hochikiasiapacific.com/indonesia>
sales@hochikiasiapacific.com

N-512, Chia Hsin No. 2 Bldg., No 96. Sec. 2, Chung Shan North Rd. Taipei, Taiwan R.O.C.
+886-2-2521-9690
<http://www.hochiki.com.tw/>
hntro@hochiki.com.tw

Unit No.509 FSS Building II No. 18 Scout Tauson Corner, Scout Castor Streets
Brgy. Laging Handa, Quezon City, Metro Manila, Philippines
+ 63 2 83658112
<https://www.hochikiasiapacific.com>
sales@hochikiasiapacific.com

2nd Floor, VIPD Building, No.4 Nguyen Thi Minh Khai Street, Da Kao Ward, District 1
Ho Chi Minh City, Vietnam
+84 28 3636 6806
<https://www.hochikiasiapacific.com/vietnam>
sales@hochikiasiapacific.com



World Class Leaders in Fire Detection Since 1918

Hochiki America Corporation

7051 Village Drive, Suite 100, Buena Park, CA 90621-2268

Phone: 714-522-2246 | Fax: 714-522-2268 sales@hochiki.com | www.HOCHIKI.com